

edition

MAYFAIR &
MARYLEBONE
MAY 2018

YOUR NEW
EXCLUSIVE
MAGAZINE

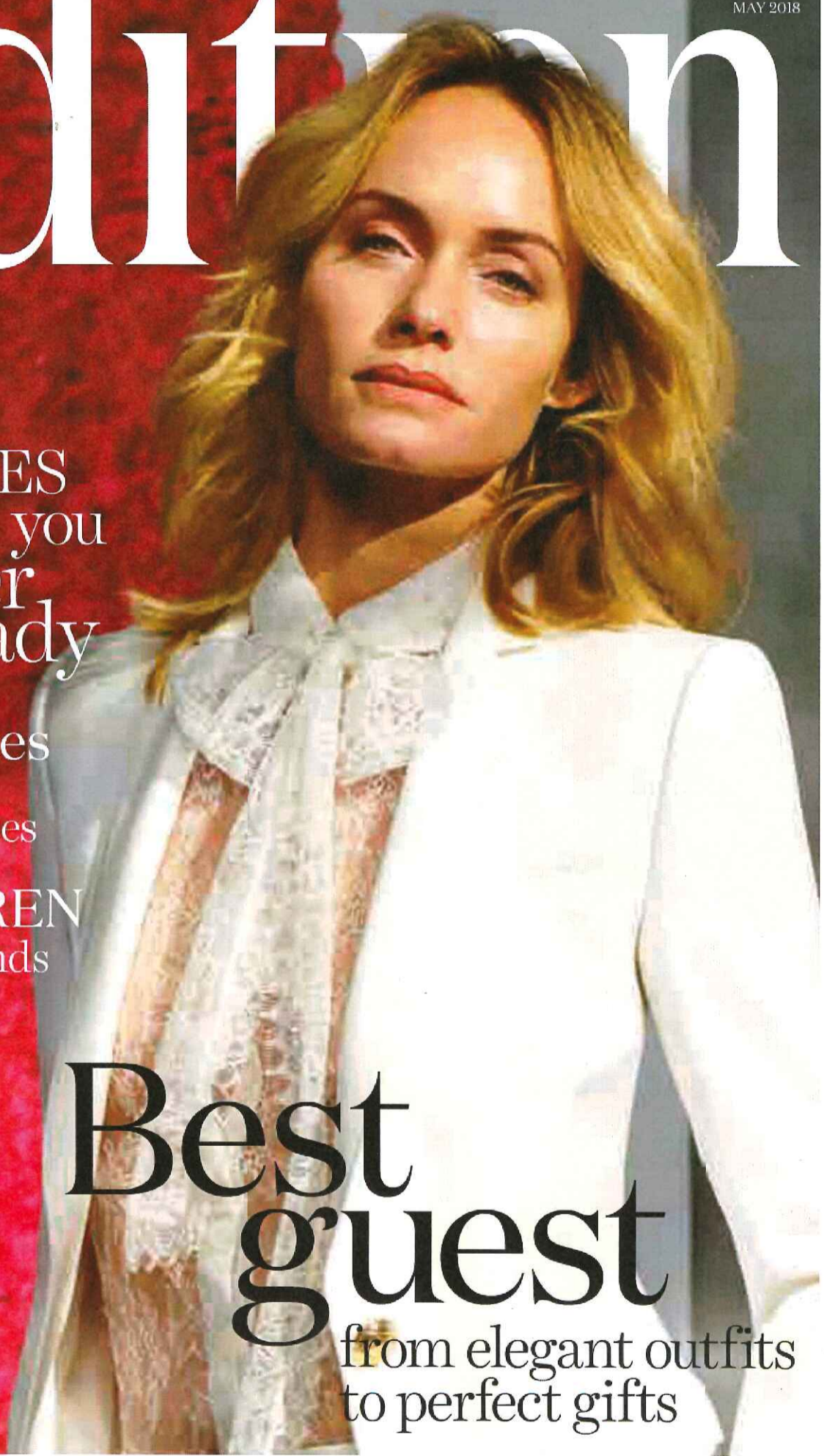
5 MOVES
to get you
summer
ready

Long lunches
Diana Henry's
sunshine recipes

GILES COREN
talks food trends
& traditions

Best
guest

from elegant outfits
to perfect gifts





ACROSS LONDON

London Craft Week 9-13 May

Now in its fourth year, London Craft Week 2018 will bring together more than 200 established and emerging makers, brands, designers and galleries from around the globe. As a celebration of craft in all its forms, the programme aims to attract a broad audience to meet and buy from artisans working across a huge spectrum of disciplines; from ceramics, wood-carving and leatherworking, to bookbinding, watchmaking and millinery. Held in museums, galleries and workspaces across the city. londoncraftweek.com



CHELSEA

The trash-ic or trash in the face of beauty

17-20 May

Veering between the opposing forces that comprise contemporary society, the Saatchi Gallery's thought-provoking new exhibition, *The trash-ic or trash in the face of beauty* is artist and painter Mouna Rebeiz's personal examination of the modern world. Focusing on the tension between what is 'trash' and what is 'beauty', with a particular emphasis on how both can co-exist in art, Rebeiz combines the techniques of both the Old Masters and the applied arts in a self-stated attempt to 'convey the movement of the times'. saatchigallery.com

Images: Dalipozzo SS18 (top); Lee Bul Willing To Be Vulnerable, 2015-16 installation view of the 20th Biennale of Sydney, 2016 (Photo: Algridas Bakas. Courtesy: Studio Lee Bul (bottom))



SOUTHBANK

Lee Bul: Crashing

30 May-19 August

Coinciding with the Hayward Gallery's 50th anniversary, this is the first time that acclaimed South Korean artist Lee Bul has exhibited in London. Pioneering and thought-provoking, Bul is known for her fascination with the human body, using it as a conduit through which to explore questions of intimacy, gender, technology and class. Spanning three decades, the exhibition will place Bul's most visionary paintings, sculptures, performances and immersive installations within a wider social and political context. southbankcentre.co.uk